

HITACHI

Reliable Solutions

HCMUK Product Guide



Explore HCMUK's range of Tracked Excavators, Wheeled Excavators, Wheel Loaders and Connected Technologies.

HCMUK PRODUCT GUIDE

Hitachi Construction Machinery UK Ltd are a wholly owned subsidiary of Hitachi Construction Machinery Europe and are responsible for the supply of excavators, wheel loaders, parts and servicing to the UK and Irish construction industry.

Hitachi produces the widest range of hydraulic excavators in the world and are renowned for their high quality, advanced technology, and unrivalled reliability.

Formed more than 50 years ago, we are a market leader in providing safe, high quality, durable and reliable products competitively, on time and anywhere in the UK and Ireland, which is why we have been awarded with the title of the 'UK's number one excavator supplier'.

We endeavour to exceed customers' expectations through the provision of excellent lifetime value and consistent service. Our experience ensures that our customer's needs are met by understanding a customer's unique requirements and circumstances, with specialists available to share their industry knowledge and guidance on the key sectors we operate within and the product range that we sell.

Ensuring a customer focused approach and holding true the values and our mission at HCMUK is one of the core fundamentals of our business and what makes us a leading provider of reliable solutions.

Contents:

3 - 4 | Our Locations

5 - 16 | Mini Excavators

17 - 28 | Medium Excavators

29 - 38 | Large Excavators

39 - 46 | Wheel Loaders

47 - 54 | Wheeled Excavators

55 - 58 | Used Equipment

59 - 64 | Support Services

OUR LOCATIONS

Thank you for choosing HCMUK



Hitachi construction machinery can be used to perform a variety of tasks, including excavating, loading, lifting and hauling, on a wide range of job sites - large or small.

With a wide range of machine options ranging from excavators to loaders, mixed with excellent lifetime value and consistent service, Hitachi Construction Machinery UK ensure our customers needs are always met.



Sales Contacts



North Region

-  Gary Warren
North Region Sales Director
07771 555 496
-  Gerry Reid
Territory Sales Manager
07771 555 476
-  Darren Graham
Territory Sales Manager
07771 555 489
-  Blair Allan
Territory Sales Manager
07771 555 464
-  Sean Philbin
Territory Sales Manager
07561 112 741

Mines & Quarries

Steven O'Mara
Mines & Quarries Manager
07771 555 443

Southern Region

-  James Pengilley
Southern Region
Sales Director
07771 555 449
-  Martin O'Hare
Territory Sales Manager
07771 555 417
-  Martyn Dewey
Senior Territory Sales
Manager
07771 555 433
-  Ian Richards
Territory Sales Manager
07771 555 467
-  Brendan Clarke
Territory Sales Manager
07771 555 440

Scan the
QR Code
to see our
contacts



Midlands & South Wales

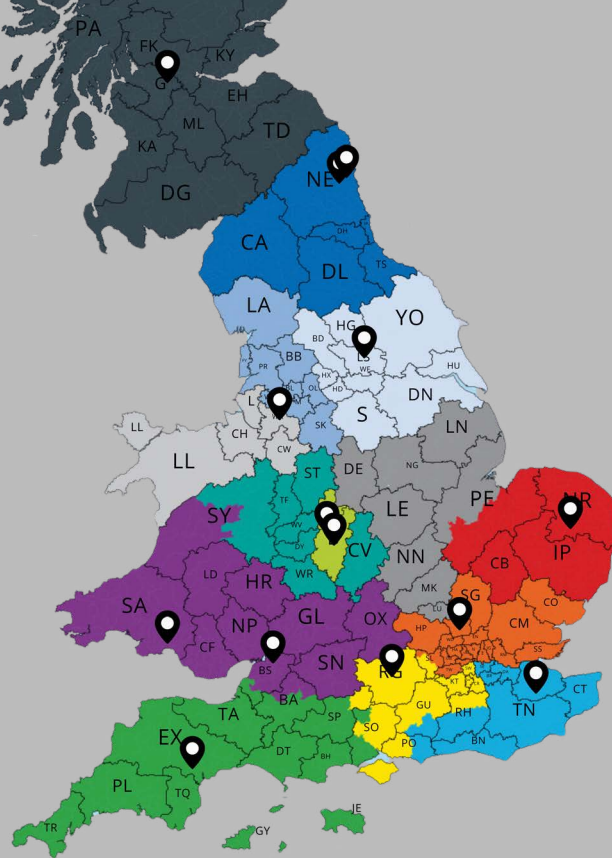
-  Jon Barnfield
Midlands & South Wales
Director of Sales
07771 555 434
-  Hayden Murrall
Senior Territory Sales
Manager
07771 555 482
-  Nick Woolliscroft
Territory Sales Manager
07771 555 442
-  Robert Stone
Territory Sales Manager
07771 555 408

Used Equipment

Brett Wood
Used Equipment Manager
07917 975 994

Aaron Stevenson
Used Sales Person South
07771 555 423

Josh Taylor
Used Sales Person North
07719 063 167



Depot Locations

Hebburn (HQ)

Unit 5, Monkton
Business Park North
Hebburn
Tyne and Wear
NE31 2JZ

T: 0191 430 8400

Bristol

Unit 2, The IO Centre
Cabot Park
Moorend Farm Avenue
Avonmouth, Bristol
BS11 0QL

T: 01179 160 890

Birmingham

Unit J9, Minworth
Industrial Park
Fulford Drive, Minworth
Birmingham
B76 1DJ

T: 01212 749 901

Cumbernauld

45 Toll Park Place
Ward Park Industrial
Estate
Cumbernauld, Glasgow
G68 0LN

T: 01698 741 470

Meriden

(Used Equipment)
Site 7, Meriden Park,
Cornets End Lane,
Meriden
CV7 7LG

T: 0191 430 8400

North London

Unit 12
Parkbury
Radlett
Hertfordshire
AL2 2DQ

T: 01923 940 650

Exeter

Unit J2
Matford Way
Matford Green Business
Park, Exeter
EX2 8FN

T: 01392 327 597

Port of Tyne

(Product Support Depot)
Unit 2, Tyne Dock
Port of Tyne
South Shields
NE33 5SP

T: 0191 816 3909

Port Talbot

Unit 23
Baglan Industrial Park
Baglan
Port Talbot
SA12 7DJ

T: 01639 865 241

Reading

59 Suttons Park
Avenue
Reading
Berkshire
RG6 1AZ

T: 01182 292 878

Wakefield

Unit 3, Astoria Court,
Tom Dando Close,
Normanton Industrial
Estate,
WF6 1TP

T: 0191 816 3909

Warrington

22
Kingsland
Grange
Warrington
WA1 4RW

T: 01925 837 338

Maidstone

Unit A3
LOC8, Ashford Road
Maidstone
Kent
ME17 1WR

T: 01732 789 694

Snetterton

Unit T29 Snetterton Park
Harling Road
Snetterton, Norwich
Norfolk
NR16 2JU

T: 01603 652 729

MINI EXCAVATORS



Meet the range of versatile Hitachi Zaxis -6 mini excavators.

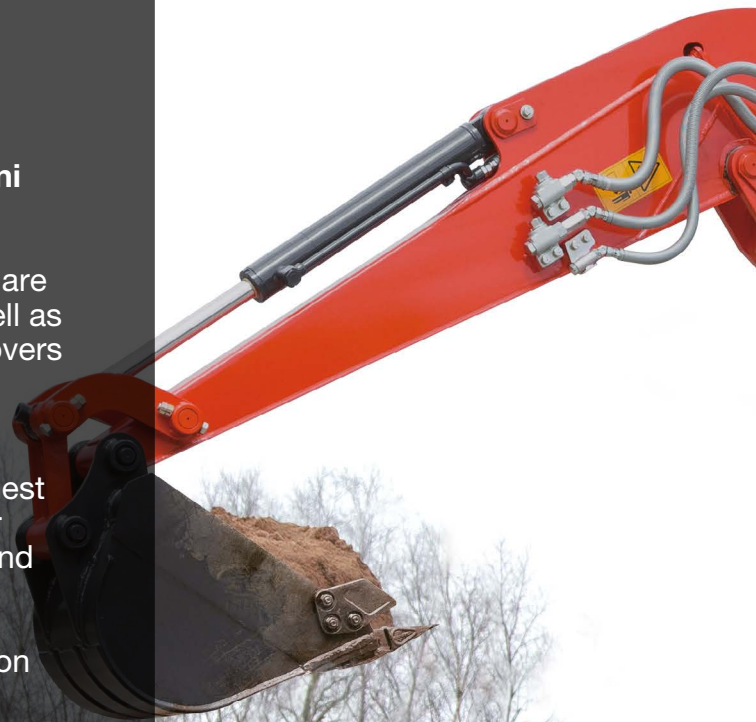
With a compact design and short-tail swing, they are ideal for urban areas where space is limited as well as being easy to maintain thanks to wide opening covers to allow for quick and easy filter changes and refuelling.

Our mini excavators are manufactured to the highest quality standards and offer the same optimal user comfort as well as superior durability, reliability, and versatility as our medium and large excavators.

They are suitable for working on utilities, foundation work, landscaping and indoor demolition or construction projects.

A versatile piece of equipment, with a 1 to 9.5-tonne capacity, mini excavators provide additional flexibility to manoeuvre and operate within tight, confined spaces.

*Under our policy of continuous improvement, we reserve the right to change specifications and design without prior notice. The illustrations do not necessarily show the standard version of the machine.





Powerful Performance in Compact Design

Don't let their small size fool you. Hitachi mini excavators pack a punch when it comes to performance. With powerful engines and advanced hydraulic systems, these machines deliver impressive digging force and breakout power, allowing you to tackle even the toughest jobs with ease. Their compact design and superior manoeuvrability make them ideal for working in tight spaces, urban environments, and on crowded job sites.



Unmatched Versatility

From digging trenches and foundations to landscaping and material handling, Hitachi mini excavators are versatile workhorses that excel in a wide range of applications. With a variety of attachments available, including buckets, hammers, and augers, you can customise your mini excavator to suit your specific needs, maximising productivity and efficiency on the job.



ZAXIS 10U

ZX10U-6 Specifications

Emissions	Diesel (Stage V)
Features	Compact Radius, Dozer Blade, Offset Boom, Variable Undercarriage
Engine Manufacturer	Yanmar
Engine Model	3 TNV 70
Rating Standard - Net	ISO 9249
Engine Output - Net (kW)	9.5
Digging Reach (mm)	3220
Dump Height (mm)	2220
Dig Depth (mm)	1780
Dipper Tearout (kN)	5.9
Bucket Breakout (kN)	11.7
Number of Main Pumps	2
Operating Weight* (kg)	1210



HITACHI

Reliable Solutions



ZAXIS 17U

A compact yet robust mini excavator designed to deliver exceptional performance in a variety of job site environments.

The Zaxis 17U & 19U boasts impressive digging force and breakout power, making it ideal for digging trenches, foundations, and utility work. The perfect choice for contractors and landscapers looking for a versatile and dependable excavator.



ZX17U-6 Specifications

Emissions	Diesel (Stage V)
Features	Canopy, Dozer Blade, Offset Boom, Variable Undercarriage, Zero-Tailswing
Engine Manufacturer	Yanmar
Engine Model	3 TNV 70
Rating Standard - Net	ISO 9249
Engine Output - Net (kW)	10.6
Digging Reach (mm)	3810
Dump Height (mm)	2510
Dig Depth (mm)	2190
Dipper Tearout (kN)	8.6
Bucket Breakout (kN)	16
Number of Main Pumps	2
Operating Weight* (kg)	1780



*Machine weights are for reference only, weights will be different for different machine configurations. Please consult with HCMUK.



ZAXIS 19U

ZX19U-6 Specifications

Emissions	Diesel (Stage V)
Features	Canopy, Dozer Blade, Offset Boom, Variable Undercarriage, Zero-Tailswing
Engine Manufacturer	Yanmar
Engine Model	3 TNV 70
Rating Standard - Net	ISO 9249
Engine Output - Net (kW)	10.6
Digging Reach (mm)	3990
Dump Height (mm)	2610
Dig Depth (mm)	2390
Dipper Tearout (kN)	9.2
Bucket Breakout (kN)	16
Number of Main Pumps	2
Operating Weight* (kg)	1900



Built to Last

When you choose Hitachi, you're choosing quality and durability that you can rely on. Our mini excavators are built to withstand the rigours of daily use, with rugged construction and high-quality components that ensure years of dependable performance. Backed by our extensive dealer network and world-class service and support, you can trust Hitachi mini excavators to keep your business moving forward.





ZAXIS 26U



The Hitachi Zaxis 26U-6 represents the pinnacle of compact excavator technology, offering unparalleled precision, power, and performance in a compact package. Engineered for versatility and efficiency, this mini excavator is designed to excel in a wide range of applications, from urban construction sites to landscaping projects.

Equipped with a state-of-the-art hydraulic system and a robust engine, the Zaxis 26U-6 delivers impressive digging force and breakout power, ensuring efficient operation even in the most challenging conditions. Its advanced control system allows for precise manoeuvring, enabling operators to tackle intricate tasks with ease and accuracy.

ZX26U-6 Specifications

Emissions	Diesel (Stage V)
Features	Cab, Compact Radius, Dozer Blade, Fixed Undercarriage, Offset Boom
Engine Manufacturer	Yanmar
Engine Model	3 TNV 76
Rating Standard - Net	ISO 9249
Engine Output - Net (kW)	14.5
Digging Reach (mm)	4710
Dump Height (mm)	3200
Dig Depth (mm)	2730
Dipper Tearout (kN)	14.5
Bucket Breakout (kN)	22.3
Number of Main Pumps	2
Operating Weight* (kg)	2650



*Machine weights are for reference only, weights will be different for different machine configurations. Please consult with HCMUK.

UNLEASHING POWER

Operator Comfort and Safety

Hitachi prioritises operator comfort and safety in the design of its mini excavators. Spacious, ergonomically designed cabs provide operators with a comfortable working environment, reducing fatigue during long hours on the job. Additionally, intuitive controls and advanced safety features enhance operator confidence and promote safe working practices.



Durability and Reliability

Designed to withstand the toughest sites every day, Hitachi mini excavators are renowned for their durability and reliability. High-quality components and rugged build quality ensure years of dependable performance, even in the most demanding conditions, ensuring you can focus on the task at hand with ultimate confidence in your machine's ability to do the job.

Environmental Sustainability

Hitachi is committed to environmental sustainability, and its mini excavator range reflects this commitment. With reduced emissions and fuel consumption compared to larger equipment, Hitachi mini excavators help minimise environmental impact while still delivering powerful performance. This eco-friendly approach aligns with the sustainability goals of modern construction projects and reinforces Hitachi's reputation as an industry leader in responsible manufacturing.



IN COMPACT PACKAGES

HITACHI

Reliable Solutions



ZAXIS 33U

ZX33U-6 Specifications

Emissions	Diesel (Stage V)
Features	Cab, Compact Radius, Dozer Blade, Fixed Undercarriage, Offset Boom
Engine Manufacturer	Yanmar
Engine Model	3 TNV 88
Rating Standard - Net	ISO 9249
Engine Output - Net (kW)	18
Digging Reach (mm)	5170
Dump Height (mm)	3310
Dig Depth (mm)	3130
Dipper Tearout (kN)	14.6
Bucket Breakout (kN)	27.2
Number of Main Pumps	2
Operating Weight* (kg)	3560



Efficiency

Equipped with advanced hydraulic systems and efficient engines, Hitachi mini excavators deliver exceptional performance and fuel efficiency. Their precise control systems enable operators to work with accuracy and precision, minimising rework and maximising productivity. This efficiency translates to cost savings and increased profitability for contractors.



*Machine weights are for reference only, weights will be different for different machine configurations. Please consult with HCMUK.

MINI BENEFITS

Short Rear-End Swing Radius

Providing additional flexibility to manoeuvre and operate within tight, confined spaces. Easy trench excavation work is possible near walls, foundations and other obstacles, improving productivity in urban areas.

Hose Rupture Valves to Boom and Dipper*

Prevents the boom and dipper from dropping in the event of a hose rupture. Offering additional safety and compliance on job sites whilst using Hitachi mini excavators.

*Auto Idle, Auto-Shift and Hose Rupture Valves are only available on ZX33-6 and above.

Auto Idle*

When moving the control lever to neutral, the Auto Idle automatically reduces engine speed to an idling level four seconds later, reducing fuel consumption. It also brings the additional benefits of lower noise levels and emissions.

Auto-Shift Traveling in High Travel Mode*

The auto speed change system shifts down travel speed when the load exceeds a certain limit (for instance, when going downhill), and shifts up when the load is less. This gives smoother operations when dozing and turning, and also reduces track wear.



ZAXIS 38U

ZX38U-6 Specifications

Emissions	Diesel (Stage V)
Features	Cab, Dozer Blade, Fixed Undercarriage, Offset Boom, Zero-Tailswing
Engine Manufacturer	Yanmar
Engine Model	3 TNV 88
Rating Standard - Net	ISO 9249
Engine Output - Net (kW)	18
Digging Reach (mm)	5520
Dump Height (mm)	3390
Dig Depth (mm)	3460
Dipper Tearout (kN)	16.9
Bucket Breakout (kN)	27.1
Number of Main Pumps	2
Operating Weight* (kg)	4040





ZAXIS 48U



At the heart of the Zaxis 48U-6 lies a robust engine and advanced hydraulic system, delivering impressive digging force and breakout power while ensuring exceptional fuel efficiency. Its compact design makes it perfect for navigating tight spaces and urban environments, without compromising stability or durability.

Operators will appreciate the intuitive controls and precise manoeuvrability, enabling them to tackle intricate tasks with ease. The spacious and ergonomically designed cab enhances operator comfort during long hours on the job, while advanced safety features ensure peace of mind and productivity.

ZX48U-6 Specifications

Emissions	Diesel (Stage V)
Features	Dozer Blade, Offset Boom, Zero-Tailswing
Engine Manufacturer	Yanmar
Engine Model	4 TNV 88 C - PYB
Rating Standard - Net	ISO 9249
Engine Output - Net (kW)	27.1
Digging Reach (mm)	6060
Dump Height (mm)	4140
Dig Depth (mm)	3630
Dipper Tearout (kN)	21
Bucket Breakout (kN)	32.1
Number of Main Pumps	1
Operating Weight* (kg)	4790



PRECISION CONTROL

The Zaxis 55U-6 features state-of-the-art control systems that provide operators with precise control and manoeuvrability, allowing for accurate and efficient operation in confined spaces and around obstacles. With intuitive controls and advanced technology, operators can tackle even the most complex situations with confidence and ease.



ZAXIS 55U

ZX55U-6 Specifications

Emissions	Diesel (Stage V)
Features	Dozer Blade, Offset Boom, Zero-Tailswing
Engine Manufacturer	Yanmar
Engine Model	4 TNV 88 C - PYB
Rating Standard - Net	ISO 9249
Engine Output - Net (kW)	27.1
Digging Reach (mm)	6260
Dump Height (mm)	4310
Dig Depth (mm)	3830
Dipper Tearout (kN)	21
Bucket Breakout (kN)	36.9
Number of Main Pumps	1
Operating Weight* (kg)	5140



ZAXIS 65USB

ZX65USB-6 Specifications

Emissions	Diesel (Stage V)
Features	Compact Radius, Dozer Blade, Offset Boom
Engine Manufacturer	Yanmar
Engine Model	4 TNV 98C
Rating Standard - Net	ISO 9249
Engine Output - Net (kW)	41.2
Digging Reach (mm)	6560
Dump Height (mm)	4410
Dig Depth (mm)	4120
Dipper Tearout (kN)	27
Bucket Breakout (kN)	41.1
Number of Main Pumps	1
Operating Weight* (kg)	6160



HITACHI

Reliable Solutions



Our cabs are spacious and thoughtfully designed with ergonomics in mind, providing ample room for all operators to work comfortably throughout the day. With plenty of legroom, adjustable seating, and intuitive control layouts, operators can maintain optimal posture and reduce fatigue, even during long hours of operation. From ergonomic joysticks and multifunctional displays to advanced technology such as automatic idle and hydraulic regeneration systems, operators can work more efficiently with less effort, resulting in increased productivity and reduced operator fatigue.

CTFLEET LINK AS STANDARD

Each new Hitachi mini excavator sold is fitted with a CTFleet Link® tracker and keypad as standard to enhance the monitoring and security of your machine. With advanced features including geofencing, live location reporting, GPS tracing and keypad immobilisation the CTFleet Link® solution offers peace of mind for owners.



MEDIUM EXCAVATORS

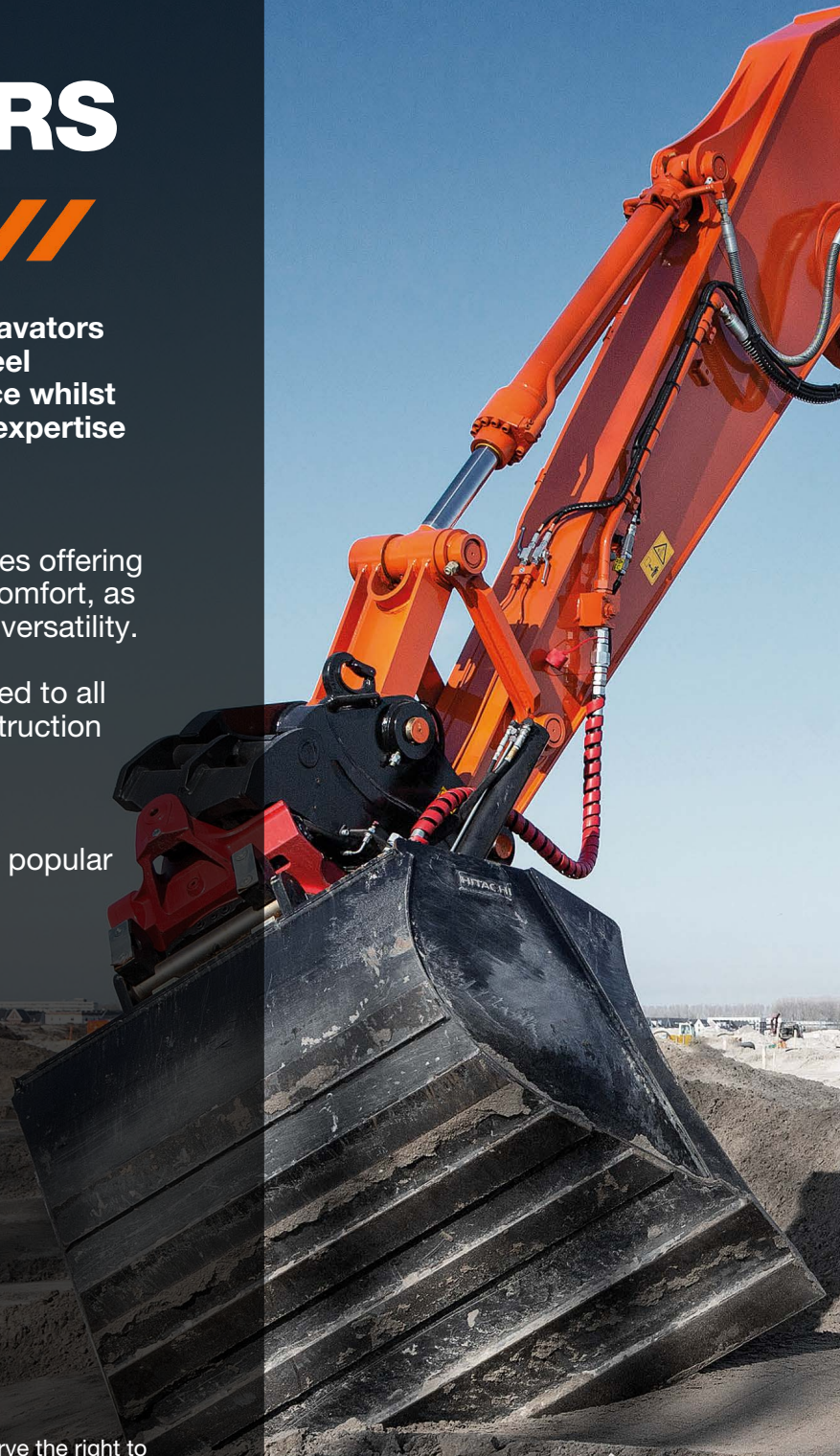


The new Zaxis-7 range of medium excavators puts you firmly in control so you can feel assured of your machine's performance whilst being supported by the technological expertise and services that Hitachi provide.

You can find our 9.5 to 35 tonne medium excavators working on a variety of job sites offering high quality standards and optimal cab comfort, as well as superior durability, reliability, and versatility.

Our range of medium excavators are suited to all types of job sites, including general construction projects and earthmoving.

The versatility of Hitachi Zaxis medium excavators is what makes them the most popular machines in the industry.



*Under our policy of continuous improvement, we reserve the right to change specifications and design without prior notice. The illustrations do not necessarily show the standard version of the machine.





YOU'RE IN CONTROL

In control of your environment - Increase your safety

Your ability to work safely is vital, not only for your own wellbeing but also for the successful completion of any project. To protect yourself and your machines from potential hazards, the new Hitachi Zaxis-7 medium excavators give you superior view of your surroundings. The visibility you enjoy from the cab includes an exceptional 270-degree bird's-eye view with the Aerial Angle® camera system.

In control of your assets - Boost your uptime

Completing a project on time and on budget depends on the ability of your construction equipment to perform all day, every day. Now standard on our Zaxis-7 range is a high-performance hydraulic filter to capture any dust in the hydraulic oil and help to reduce running costs.

In control of your business - Improve your profit

You can look forward to increasing profits thanks to the impressive fuel economy of these Stage-V compliant engines. Hitachi's industry-leading hydraulic systems TRIAS III & HIOS V ensures that this incredible level of performance is achieved in every application.

In control of your comfort - Feel the difference

Hitachi's redesigned, state-of-the-art Zaxis-7 medium excavator cab gives you the perfect working environment. The easy operation comes from the new ergonomic design of the console and switches, and convenient access to controls. You can navigate quickly through the menu on the 8" LCD monitor and the refreshed layout offers a clear display and desirable functionality such as air conditioning, DAB+ radio and Bluetooth®.

In control of your fleet - Manage your machine

Hitachi offers a wide range of after-sales services to help you feel in total control of your fleet and workload. These initiatives give you access to vital data and tools to manage your machine. Remote monitoring systems Global e-Service and ConSite send operational data daily via GPRS or satellite from your excavator to www.globaleservice.com. CTFleet Link® gives you access to a live online portal to monitor the performance and location of not just your Hitachi equipment in real time but also those of other manufacturers you may have in your fleet.

HITACHI

Reliable Solutions



ZAXIS 95US

Discover the power, precision, and performance of the Hitachi Zaxis 95US-7 excavator and take your construction projects to new heights of success. Whether you're digging trenches, loading trucks, or performing utility work, this compact excavator is the ultimate solution for maximising productivity and efficiency on any job site.



ZX95US-7 Specifications

Emissions	Diesel (Stage V)
Features	Cab, Compact Radius, Dozer Blade, Fixed Undercarriage
Engine Manufacturer	Yanmar
Engine Model	4TNV98CT
Rating Standard - Gross	ISO 14396
Engine Output - Gross (kW)	50.4
Dump Height (mm)	1950
Dig Depth (mm)	4650
Dipper Tearout (kN)	34.5
Bucket Breakout (kN)	57.5
Number of Main Pumps	3
Total Pump Flow (L/min)	200
Max Operating Weight* (kg)	9370



*Machine weights are for reference only, weights will be different for different machine configurations. Please consult with HCMUK.

POWERING PROGRESS

Protect Your Investment

If your machine will be working in severe conditions, or you want to minimise repair costs, you can take advantage of a unique extended warranty programme called HELP (Hitachi Extended Life Program) and comprehensive service contracts. These can help to optimise performance, reduce downtime and ensure a higher resale value.



Manage Your Machine

Consite oil is a unique innovation and comes standard in all medium and large size excavators and loading shovels from the ZX130-7 up. It continuously monitors the quality of engine and hydraulic oil, 24/7. Data is transmitted daily via two oil sensors to Global e-Service. These detect if the oil quality has deteriorated, due to contamination or low viscosity. This innovative feature provides accurate estimations of when oil changes are required. It reduces maintenance and unscheduled downtime, and gives you peace of mind thanks to scheduled servicing and ultimately a higher resale value.

ONE DIG AT A TIME

ZAXIS 95USB

ZX95USB-7 Specifications

Emissions	Diesel (Stage V)
Features	Cab, Compact Radius, Dozer Blade, Offset Boom, Fixed Undercarriage
Engine Manufacturer	Yanmar
Engine Model	4TNV98CT
Rating Standard - Gross	ISO 14396
Engine Output - Gross (kW)	50.4
Dump Height (mm)	5120
Dig Depth (mm)	4530
Dipper Tearout (kN)	34.5
Bucket Breakout (kN)	57.5
Number of Main Pumps	3
Total Pump Flow (L/min)	200
Max Operating Weight* (kg)	9810





ZAXIS 130 LCN

The Hitachi ZX130-7 stands out as a top choice for customers seeking to increase profits and reduce running costs due to its exceptional performance, versatility and reliability. The Stage-V compliant model has a state of the art cab and advanced safety features, ensuring both comfort and confidence on the job.



ZX130-7 Specifications

Emissions	Diesel (Stage V)
Features	Cab, Fixed Undercarriage
Engine Manufacturer	Isuzu
Rating Standard - Gross	ISO 14396
Engine Output - Gross (kW)	74
Dump Height (mm)	6190
Dig Depth (mm)	5540
Dipper Tearout (kN)	69
Bucket Breakout (kN)	104
Number of Main Pumps	2
Total Pump Flow (L/min)	234
Max Operating Weight* (kg)	14200



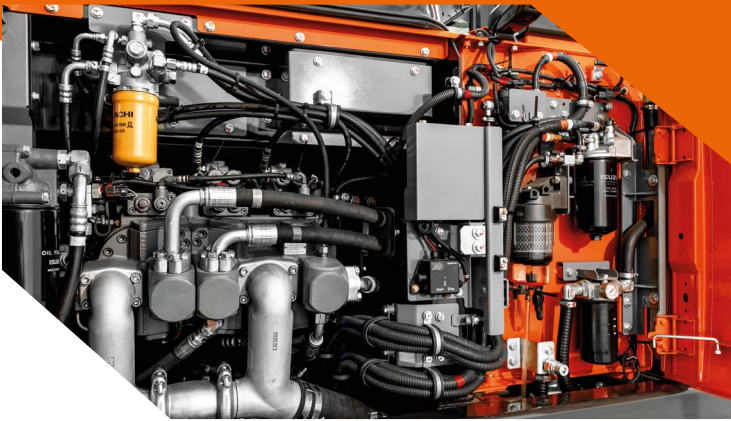
MEDIUM EXCAVATOR BENEFITS

Integrated console and seat suspension gives a greater sense of control, and helps to reduce fatigue.

The improved efficiency of the new HIOS V hydraulic system reduces fuel consumption and results in higher productivity.

Visibility of the job site is excellent thanks to the Aerial Angle® camera system and LCD monitor.

Sensors monitor oil continuously and contribute to preventative maintenance, helping to reduce downtime.



ZAXIS 135us

ZX135US-7 Specifications

Emissions	Diesel (Stage V)
Features	Cab, Compact Radius, Optional Dozer Blade, Fixed Undercarriage
Engine Manufacturer	Isuzu
Rating Standard - Gross	ISO 14396
Engine Output - Gross (kW)	74
Dump Height (mm)	6830
Dig Depth (mm)	5490
Dipper Tearout (kN)	69
Bucket Breakout (kN)	104
Number of Main Pumps	2
Total Pump Flow (L/min)	234
Max Operating Weight* (kg)	14800





ZAXIS 160_{LC}

ZX160LC-7 Specifications

Emissions	Diesel (Stage V)
Features	Cab, Fixed Undercarriage, Long Undercarriage
Engine Manufacturer	Yanmar
Engine Model	4TN107
Rating Standard - Gross	ISO 14396
Engine Output - Gross (kW)	101.3
Dump Height (mm)	6170
Dig Depth (mm)	5980
Dipper Tearout (kN)	91
Bucket Breakout (kN)	112
Number of Main Pumps	2
Total Pump Flow (L/min)	380
Max Operating Weight* (kg)	18200

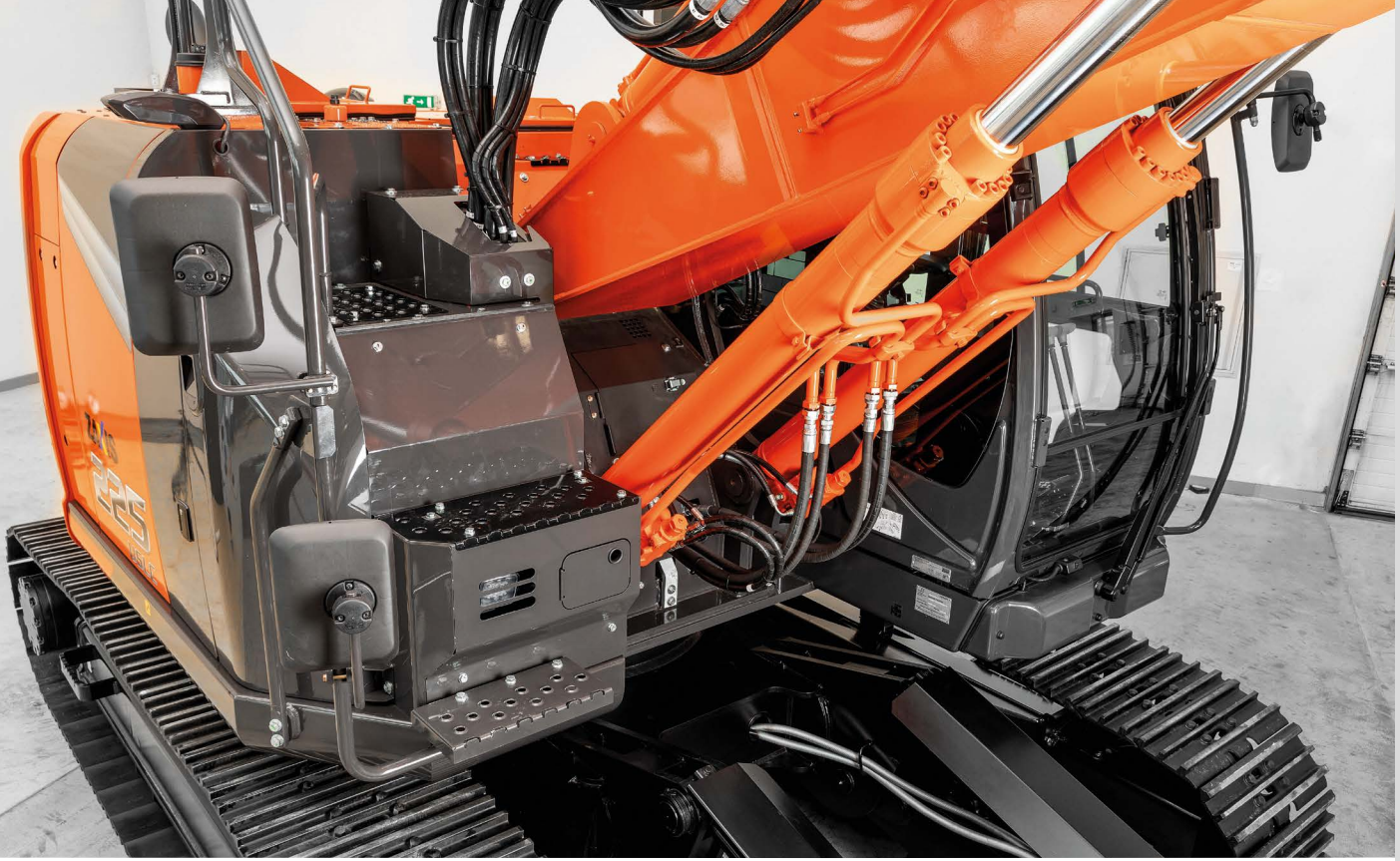


ZAXIS 210_{LC}

ZX210LC-7 Specifications

Emissions	Diesel (Stage V)
Features	Cab, Fixed Undercarriage, Long Undercarriage
Engine Manufacturer	Isuzu
Engine Model	4HK1
Rating Standard - Gross	ISO 14396
Engine Output - Gross (kW)	128.4
Dump Height (mm)	7180
Dig Depth (mm)	6670
Dipper Tearout (kN)	114
Bucket Breakout (kN)	158
Number of Main Pumps	3
Total Pump Flow (L/min)	608
Max Operating Weight* (kg)	22800





ZAXIS 225 us



With its compact design and powerful performance, the ZX225US-7 is perfect for navigating tight job sites without sacrificing digging force or lifting capacity.

Operators will appreciate the comfortable cabin and advanced safety features, ensuring productivity and peace of mind on every project.

Backed by Hitachi's renowned reliability and global support network, the ZX225US-7 is the ultimate choice for maximising efficiency and profitability in any excavation task.

ZX225USLC-7 Specifications

Emissions	Diesel (Stage V)
Features	Cab, Compact Radius, Fixed Undercarriage, Long Undercarriage
Engine Manufacturer	Isuzu
Engine Model	4HK1
Rating Standard - Gross	ISO 14396
Engine Output - Gross (kW)	128.4
Dump Height (mm)	8290
Dig Depth (mm)	6610
Dipper Tearout (kN)	114
Bucket Breakout (kN)	158
Number of Main Pumps	3
Total Pump Flow (L/min)	608
Operating Weight* (kg)	26000



ZAXIS 225 USR

ZX225USRLC-7 Specifications

Emissions	Diesel (Stage V)
Features	Cab, Compact Radius, Fixed Undercarriage, Long Undercarriage
Engine Manufacturer	Isuzu
Engine Model	4HK1
Rating Standard - Gross	ISO 14396
Engine Output - Gross (kW)	128.4
Dump Height (mm)	8290
Dig Depth (mm)	6610
Dipper Tearout (kN)	114
Bucket Breakout (kN)	158
Number of Main Pumps	3
Total Pump Flow (L/min)	608
Operating Weight* (kg)	25200



ZAXIS 250 LC

ZX250LC-7 Specifications

Emissions	Diesel (Stage V)
Features	Cab, Fixed Undercarriage, Long Undercarriage
Engine Manufacturer	Isuzu
Engine Model	4HK1X
Rating Standard - Gross	ISO 14396
Engine Output - Gross (kW)	140
Dump Height (mm)	7200
Dig Depth (mm)	6960
Dipper Tearout (kN)	131
Bucket Breakout (kN)	188
Number of Main Pumps	3
Total Pump Flow (L/min)	642
Operating Weight* (kg)	27200



ZAXIS 300 LC

ZX300LC-7 Specifications

Emissions	Diesel (Stage V)
Features	Cab, Fixed Undercarriage, Long Undercarriage
Engine Manufacturer	Isuzu
Engine Model	6HK1X
Rating Standard - Gross	ISO 14396
Engine Output - Gross (kW)	197
Dump Height (mm)	6980
Dig Depth (mm)	7220
Dipper Tearout (kN)	144
Bucket Breakout (kN)	202
Number of Main Pumps	3
Total Pump Flow (L/min)	682
Operating Weight* (kg)	30800

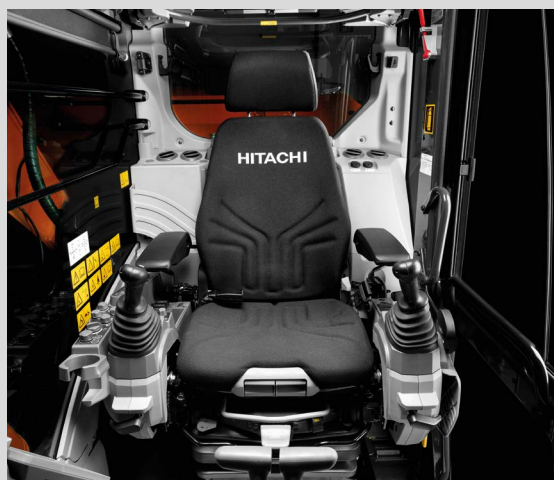


*Machine weights are for reference only, weights will be different for different machine configurations. Please consult with HCMUK.

COMFORT BUILT IN

Spacious and Ergonomic Cab Design

Hitachi Medium Excavators feature spacious and thoughtfully designed cabs that prioritise operator comfort. With ample room, adjustable seating, and intuitive control layouts, operators can work comfortably for extended periods, reducing fatigue and enhancing productivity. Operate longer, and feel comfortable doing it.



Low Noise Levels

Hitachi prioritises a quiet working environment, and the Medium excavators are engineered with sound-dampening materials to minimise noise levels in the cab. This creates a more pleasant working environment for operators, reducing stress and fatigue during long hours of operation.

Built-in Convenience

Hitachi Medium excavators feature a range of convenient amenities like storage compartments, cup holders, and charging ports placed strategically throughout the cab, allowing operators to keep essential items close at hand, staying safe inside the machine, and staying connected throughout the workday.



FOR THE HARSHEST OF JOB SITES

HITACHI

Reliable Solutions



ZAXIS 350Lc

Whether tackling large-scale earthmoving projects or precision excavation tasks, the ZX350-7 excels in performance, reliability, and durability, backed by Hitachi's legacy of engineering excellence and UK support network. Experience the difference with the Hitachi ZX350-7 excavator – where power meets precision for unparalleled results.



ZX350LC-7 Specifications

Emissions	Diesel (Stage V)
Features	Cab, Fixed Undercarriage, Long Undercarriage
Engine Manufacturer	Isuzu
Engine Model	6HK1X
Rating Standard - Gross	ISO 14396
Engine Output - Gross (kW)	210
Dump Height (mm)	7240
Dig Depth (mm)	7380
Dipper Tearout (kN)	185
Bucket Breakout (kN)	246
Number of Main Pumps	3
Total Pump Flow (L/min)	836
Operating Weight* (kg)	36200



LARGE EXCAVATORS



The new Zaxis-7 range of large excavators puts you firmly in control, so you can feel assured of your machine's performance, and supported by the technological expertise and services that Hitachi provide.

You can find our 50 to 90-tonne machines on a variety of job sites offering high quality standards and optimal cab comfort, as well as superior durability, reliability, and versatility.

Our large excavator range can operate for 24 hours a day in the most challenging environments, for earthmoving, construction, mining, and quarrying operations.

Combining engineering excellence and unparalleled build quality, our large excavators are a valuable addition to any fleet.

*Under our policy of continuous improvement, we reserve the right to change specifications and design without prior notice. The illustrations do not necessarily show the standard version of the machine.







FEEL THE DIFFERENCE

Designed to conquer the toughest terrains and take on the most challenging tasks, each machine in our range represents the pinnacle of engineering precision and performance. With advanced technology, ergonomic design and unwavering durability, Hitachi excavators set the standard for productivity and efficiency on the job site. Feel the difference and elevate your operations with Hitachi's range of large excavators.



The state-of-the-art ultra-spacious cab is the perfect working environment. It offers operators ultimate comfort and quality, with reduced noise and vibration levels in the cab, which are both vital for the mining and quarrying industries.

Features include the synchronised motion of the seat and height adjustable console with three positions to choose from reducing operator fatigue. Easy operation comes from the ergonomic design of the console and switches, and the hi-res anti-glare 8" screen is also easier to view.

IMPROVE YOUR PROFIT

An impressive fuel saving of up to 20% (PWR mode) compared to previous models is achieved by Hitachi's industry-leading HIOS-V hydraulic system.

This also enhances efficiency in the swing, boom lowering and arm bucket roll-out. Productivity is further increased by the improved front speed for loading operations; and the increased engine output of the Zaxis-7 machines contributes to greater productivity.



ZAXIS 490LCH



Offering a harmonious blend of power, efficiency and durability with its robust engine and advanced hydraulic system, the ZX490LCH-7 delivers unmatched digging force, breakout force and lifting capacity. This makes it an indispensable asset for tackling even the most demanding tasks. Its sturdy construction ensures exceptional durability and uptime, whilst advanced technology features enhance performance and efficiency on the job site.

ZX490LCH-7 Front Specifications

Emissions	Diesel (Stage V)
Features	Long Undercarriage, Variable Undercarriage
Engine Manufacturer	Isuzu
Engine Model	6 WG1
Rating Standard - Gross	ISO 14396
Engine Output - Gross (kW)	296
Dump Height (mm)	7720
Dig Depth (mm)	7700
Dipper Tearout (kN)	225
Bucket Breakout (kN)	302
Number of Main Pumps	2
Total Flow (L/min)	770
Max Operating Weight* (kg)	51900





ZAXIS 530 LCH

ZX530LCH-7 H Front Specifications

Emissions	Diesel (Stage V)
Features	Heavy Duty, Long Undercarriage, Variable Undercarriage
Engine Manufacturer	Isuzu
Engine Model	6 WG1
Rating Standard - Gross	ISO 14396
Engine Output - Gross (kW)	296
Dump Height (mm)	7730
Dig Depth (mm)	7690
Dipper Tearout (kN)	225
Bucket Breakout (kN)	302
Number of Main Pumps	2
Total Flow (L/min)	770
Max Operating Weight* (kg)	54900



ZAXIS 530 LCH

ZX530LCH-7 BE Front Specifications

Emissions	Diesel (Stage V)
Features	Heavy Duty, Long/ Variable Undercarriage, Mass Excavation
Engine Manufacturer	Isuzu
Engine Model	6 WG1
Rating Standard - Gross	ISO 14396
Engine Output - Gross (kW)	296
Dump Height (mm)	7520
Dig Depth (mm)	6050
Dipper Tearout (kN)	265
Bucket Breakout (kN)	300
Number of Main Pumps	2
Total Flow (L/min)	770
Max Operating Weight* (kg)	55100





ZAXIS 690 LCH

From towering construction sites to rugged terrains, the ZX690LCH-7 commands attention with its formidable digging force and lifting capacity, effortlessly conquering the most challenging tasks. Equipped with cutting-edge safety features and intuitive controls, this excavator ensures both productivity and peace of mind on the job site. With the Hitachi ZX690LCH-7, experience the true meaning of superiority in heavy excavation machinery.



ZX690LCH-7 Specifications

	BE Front	H Front
Emissions	Diesel (Stage V)	Diesel (Stage V)
Features	Heavy Duty, Long Undercarriage, Mass Excavation, Variable Undercarriage	Heavy Duty, Long Undercarriage, Variable Undercarriage
Engine Manufacturer	Isuzu	Isuzu
Engine Model	6 WG1	6 WG1
Rating Standard - Gross	ISO 14396	ISO 14396
Engine Output - Gross (kW)	348	348
Dump Height (mm)	7330	8020
Dig Depth (mm)	7120	8560
Dipper Tearout (kN)	303	255
Bucket Breakout (kN)	369	324
Number of Main Pumps	2	2
Total Flow (L/min)	978	978
Max Operating Weight* (kg)	70,800	71,400



*Machine weights are for reference only, weights will be different for different machine configurations. Please consult with HCMUK.



ZAXIS 690 LCR

The Hitachi ZX690LCR-7 excavator stands out as a unique and versatile solution in the world of heavy excavation.

The arm of the ZX690LCR-7 has thicker side frames and plates, as well as other robust components, to protect against damage during digging and loading of limestone and crushed stone. This helps to enhance the machine's durability for demanding sites.



ZX690LCR-7 Specifications		
	H Front	BE Front
Emissions	Diesel (Stage V)	Diesel (Stage V)
Features	Heavy Duty, Long Undercarriage, Variable Undercarriage	Heavy Duty, Long Undercarriage, Mass Excavation, Variable Undercarriage
Engine Manufacturer	Isuzu	Isuzu
Engine Model	6 WG1	6 WG1
Rating Standard - Gross	ISO 14396	ISO 14396
Engine Output - Gross (kW)	348	348
Dump Height (mm)	8020	7330
Dig Depth (mm)	8560	7120
Dipper Tearout (kN)	255	306
Bucket Breakout (kN)	324	369
Number of Main Pumps	2	2
Total Flow (L/min)	978	978
Max Operating Weight* (kg)	70700	70900





ZAXIS 890 LCH

ZX890LCH-7 Specifications

	BE Front	H Front
Emissions	Diesel (Stage V)	Diesel (Stage V)
Features	Heavy Duty, Long Undercarriage, Mass Excavation, Variable Undercarriage	Heavy Duty, Long Undercarriage, Variable Undercarriage
Engine Manufacturer	Isuzu	Isuzu
Engine Model	6 WG1	6 WG1
Rating Standard - Gross	ISO 14396	ISO 14396
Engine Output - Gross (kW)	382	382
Dump Height (mm)	3770	3990
Dig Depth (mm)	7140	8870
Dipper Tearout (kN)	394	324
Bucket Breakout (kN)	472	402
Number of Main Pumps	2	2
Total Flow (L/min)	1112	1112
Max Operating Weight* (kg)	87500	86300





ZAXIS 890 LCR

ZX890LCR-7 Specifications

	H Front	BE Front
Emissions	Diesel (Stage V)	Diesel (Stage V)
Features	Heavy Duty, Long Undercarriage, Variable Undercarriage	Heavy Duty, Long Undercarriage, Mass Excavation, Variable Undercarriage
Engine Manufacturer	Isuzu	Isuzu
Engine Model	6 WG1	6 WG1
Rating Standard - Gross	ISO 14396	ISO 14396
Engine Output - Gross (kW)	382	382
Dump Height (mm)	9080	8130
Dig Depth (mm)	8870	7140
Dipper Tearout (kN)	324	394
Bucket Breakout (kN)	402	472
Number of Main Pumps	2	2
Total Flow (L/min)	1112	1112
Max Operating Weight* (kg)	86500	86800



A RANGE OF **BENEFITS**

Versatility

From digging foundations to loading trucks and grading terrain, Hitachi Large Excavators excel in a wide range of applications. Their ability to handle various tasks with precision and efficiency makes them versatile assets on any job site, eliminating the need for multiple machines and streamlining operations.

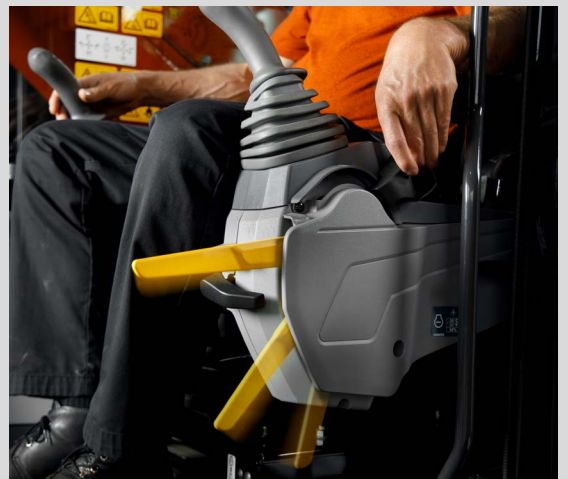


Improved Performance

The environmental performance of Zaxis-7 large excavators is enhanced by the SCR (selective catalytic reduction) system, which reduces nitrogen oxide from exhaust gas by injecting a urea solution. The new machines comply with Stage V emissions regulations thanks to the combination of the SCR, DOC (diesel oxidation catalyst) and CSF (catalysed soot filter).

Improved Safety

Hitachi prioritises safety in the design of its excavators, and the Large Excavator range is no exception. With features like rear-view cameras, proximity sensors, and advanced stability controls, operators can work confidently knowing that they are protected from potential hazards on the job site.



TO KEEP YOUR JOB SITE **PRODUCTIVE**

WHEEL LOADERS



Introducing Hitachi Construction Machinery's range of ZW-7 wheel loaders.

You're at the heart of Hitachi's design for its latest range of wheel loaders, also known as front-end loaders. To continuously improve on previous generation machines, we've focused on enhancing your experience in the cab as an operator by providing you with a range of high-quality wheel loaders to choose from.

We've considered the challenges you face as the owner of a successful business, and we've focused on the ways in which we can support you over the life cycle of your machine. By putting you at the heart of the ZW-7 wheel loader range, we invite you to take control of your workspace and your fleet. By working in partnership, we will help you to create your vision.

*Under our policy of continuous improvement, we reserve the right to change specifications and design without prior notice. The illustrations do not necessarily show the standard version of the machine.





YOU'RE IN CONTROL

In control of your environment - Increase your safety

Your ability to work safely is vital, not only for your own well-being but also for the successful completion of any project. To protect yourself and your machine from potential hazards, the new Hitachi ZW-7 wheel loaders give you a superior view of your surroundings, so you can see the job site from all angles. The visibility you enjoy from the cab includes an exceptional 270-degree bird's-eye view with the Aerial Angle® camera system.

In control of your assets - Boost your uptime

Completing a project on time and on budget depends on the ability of your construction equipment to perform all day, every day. That's why Hitachi owners have profited from generations of ultra-reliable and durable machinery – and the ZW-7 range is no exception.

In control of your fleet - Manage your machine

Hitachi remote monitoring systems enable owners to feel in total control of their fleet and workload with access to vital data courtesy of the Owner's Site and ConSite. Both systems send operational data via GPRS or satellite from the excavator to Global e-Service on a daily basis. ConSite summarises the information in a monthly email, and the ConSite Pocket app shows real-time alerts for any potential issues. CTFleet Link® gives you access to a live online portal to monitor the performance and location of not just your Hitachi equipment in real time but also those of other manufacturers you may have in your fleet.

In control of your comfort - Feel the difference

Hitachi's redesigned, state-of-the-art ZW-7 cab gives you the perfect working environment. The ultra-spacious ZW-7 range offers you an industry-leading, first-class cab with the ultimate comfort and quality, as well as some of the lowest noise and vibration levels in the market. Hitachi front end loaders have been designed and shaped to carry large quantities of debris both on and off-road with large wheels making them suitable for a range of environments.

In Control of Your Business - Improve your profit

The success of your business depends on the reliability and efficiency of your construction machinery. With Hitachi's latest ZW-7 wheel loaders, you can count on the highest quality, the ultimate in operating comfort and reduced running costs – all of which will have a positive impact on your bottom line.





ZW160

ZW160-7 Specifications

Emissions	Diesel (Stage V)
Features	Auto Lube, Weigh Loader, Reverse Radar
High lift arm option available	Yes
ROPS / FOPS	Yes / Yes
Engine Manufacturer	Cummins
Engine Model	B4.5
Number of Cylinders	4
Rating Standard - Gross	ISO 14396
Engine Output - Gross (kW)	123
Transmission Type	Hydrostatic w/Summation Powershift
Number of Ranges	4F - 4R
Heaped Capacity (m ³)	2.3
Speed - Forward Maximum (kph)	39
Speed - Reverse Maximum (kph)	39
Ride Control System	Yes
Operating Weight* (kg)	13540
Static Tipping Load Straight ISO14397 (kg)	10450
Static Tipping Load Full Turn ISO14397 (kg)	9050



WHEEL LOADER BENEFITS

Low Total Cost of Ownership:

Hitachi wheel loaders are engineered for long-term value, with all features and components designed to minimise maintenance requirements and maximise durability in harsh conditions. This results in a lower total cost of ownership over the lifespan of the machine, providing contractors with a cost-effective solution for their material handling needs.

Customisation Options:

Hitachi offers a wide range of customisation options for its wheel loaders, allowing customers to tailor the machines to their specific needs and preferences. Whether it's selecting the right bucket size, adding specialised attachments, or choosing optional features like automatic lubrication systems or heated seats, customers have the flexibility to configure the machines to suit their unique requirements.



ZW180

The Hitachi ZW180-7 Wheel Loader redefines versatility and efficiency in material handling, boasting a unique combination of compact design and robust performance. Its agile frame allows it to navigate tight spaces and urban environments with ease, making it the perfect choice for projects where space is limited. Equipped with advanced technology integration, the ZW180-7 ensures operators have real-time access to critical data, optimising performance and minimising downtime.



ZW180-7 Specifications

Emissions	Diesel (Stage V)
Features	Auto Lube, Weigh Loader, Reverse Radar
High lift arm option available	Yes
ROPS / FOPS	Yes / Yes
Engine Manufacturer	Cummins
Engine Model	B6.7
Number of Cylinders	6
Rating Standard - Gross	ISO 14396
Engine Output - Gross (kW)	129
Transmission Type	Powershift
Number of Ranges	5F - 3R
Heaped Capacity (m ³)	2.8
Speed - Forward Maximum (kph)	39
Speed - Reverse Maximum (kph)	28.3
Ride Control System	Yes
Operating Weight* (kg)	15470
Static Tipping Load Straight ISO14397 (kg)	12440
Static Tipping Load Full Turn ISO14397 (kg)	10750



HITACHI

Reliable Solutions

ZW220

ZW220-7 Specifications

Emissions	Diesel (Stage V)
Features	Auto Lube, Weigh Loader, Reverse Radar
High lift arm option available	Yes
ROPS / FOPS	Yes / Yes
Engine Manufacturer	Cummins
Engine Model	B6.7
Number of Cylinders	6
Rating Standard - Gross	ISO 14396
Engine Output - Gross (kW)	157
Transmission Type	Powershift
Number of Ranges	5F - 3R
Heaped Capacity (m ³)	3.3
Speed - Forward Maximum (kph)	36.3
Speed - Reverse Maximum (kph)	26.9
Ride Control System	Yes
Operating Weight* (kg)	18560
Static Tipping Load Straight ISO14397 (kg)	14970
Static Tipping Load Full Turn ISO14397 (kg)	13220





ZW250

ZW250-7 Specifications

Emissions	Diesel (Stage V)
Features	Auto Lube, Weigh Loader, Reverse Radar
High lift arm option available	Yes
ROPS / FOPS	Yes / Yes
Engine Manufacturer	Cummins
Engine Model	B6.7
Number of Cylinders	6
Rating Standard - Gross	ISO 14396
Engine Output - Gross (kW)	183
Transmission Type	Powershift
Number of Ranges	5F - 3R
Heaped Capacity (m ³)	3.8
Speed - Forward Maximum (kph)	38.9
Speed - Reverse Maximum (kph)	27.4
Ride Control System	Yes
Operating Weight* (kg)	20830
Static Tipping Load Straight ISO14397 (kg)	16000
Static Tipping Load Full Turn ISO14397 (kg)	14100



ZW310

The Hitachi ZW310-7 Wheel Loader represents a significant step up in size and capability, offering unmatched power, versatility, and efficiency for demanding material handling tasks. As a larger model in the lineup, the ZW310-7 boasts a higher horsepower engine and larger bucket capacity, allowing it to tackle larger volumes of material with ease. Despite its size, the ZW310-7 maintains impressive agility and manoeuvrability, thanks to features like advanced steering systems and optimised weight distribution, allowing it to navigate challenging terrain and congested job sites with confidence.



ZW310-7 Specifications

Emissions	Diesel (Stage V)
Features	Auto Lube, Weigh Loader, Reverse Radar
High lift arm option available	Yes
ROPS / FOPS	Yes / Yes
Engine Manufacturer	Cummins
Engine Model	L9
Number of Cylinders	6
Rating Standard - Gross	ISO 14396
Engine Output - Gross (kW)	233
Transmission Type	Powershift
Number of Ranges	4F - 4R
Heaped Capacity (m ³)	4.3
Speed - Forward Maximum (kph)	36
Speed - Reverse Maximum (kph)	36
Ride Control System	Yes
Operating Weight* (kg)	24710
Static Tipping Load Straight ISO14397 (kg)	18830
Static Tipping Load Full Turn ISO14397 (kg)	16040

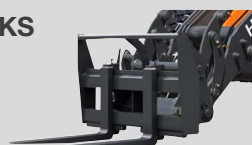


ATTACHMENTS

BUCKETS



FORKS



SPECIALIST



WHEELED EXCAVATORS



By putting you at the heart of the Zaxis-7 range, we invite you to take control of your workspace and your fleet and by working in partnership, we will help you to create your vision.

The success of your business depends on the reliability and efficiency of your construction machinery.

With Hitachi's latest Zaxis-7 wheeled excavators, you can count on the highest quality, the ultimate in operating comfort and reduced running costs.

Showcasing a wide range of features, the Hitachi wheeled excavators are designed to optimise operator comfort, whilst controlling their profitability, safety and uptime.

Our industry-leading wheeled excavators deliver outstanding performance and are suitable for all kinds of jobs including groundwork, earthmoving, road construction, and more.

*Under our policy of continuous improvement, we reserve the right to change specifications and design without prior notice. The illustrations do not necessarily show the standard version of the machine.







YOU'RE IN CONTROL

In control of your environment - Increase your safety

The cab offers a superior view of the job site to protect operators and the machine from potential hazards. Visibility is boosted by an exceptional 270-degree bird's-eye view with the Aerial Angle® camera system. Operators can choose from six image options on the monitor to view the immediate environment. Their vision through the cab's front window is also improved by the slim steering column (with a wider adjustment angle) and smaller steering wheel. To enable operators to work more confidently and productively, even in challenging conditions, the Zaxis-7 wheeled excavators are fitted with new features such as LED work lights, a windscreen wiper with an increased sweeping area, and larger mirrors. For additional safety, the upper structure and front attachment will lock in place when the machine is in the correct position, for driving on public roads.

In control of your comfort - Feel the difference

The redesigned Zaxis-7 cab is the perfect working environment for operators. Ultra-spacious, it offers the ultimate in comfort and quality, with low noise levels and less vibration than the previous generation.

In control of your business - Improve your profit

When purchasing Hitachi wheeled excavators owners can count on increasing their profits thanks to the reduced fuel consumption and efficient operation of the new wheeled excavators across a variety of applications. The industry-leading HIOS V hydraulic system increases front speed and delivers up to 7% less fuel consumption than the previous models.

In control of your fleet - Manage your machine

Hitachi remote monitoring systems enable owners to feel in total control of their fleet and workload with access to vital data courtesy of the Owner's Site and ConSite. Both systems send operational data via GPRS or satellite from the excavator to Global e-Service on a daily basis. ConSite summarises the information in a monthly email, and the ConSite Pocket app shows real-time alerts for any potential issues. CTFleet Link® gives you access to a live online portal to monitor the performance and location of your fleet.

In control of your assets - Boost your uptime

The Zaxis-7 wheeled excavator range has been built to last. The new models have been tested rigorously at dedicated facilities in Japan to ensure they deliver reliable performance and high levels of uptime. Durability and quality are found in every detail, such as the single-piece undercarriage that benefits from the greater oscillation of the front axle, enhanced outrigger hydraulics and fenders protecting the upper structure from dirt. Downtime is prevented by the durable after-treatment system and minimised by the priority given to easy maintenance and cleaning.

ZAXIS 135 W

ZX135W-7 Specifications

Emissions	Diesel (Stage V)
Regions	Europe
Features	2-Piece Boom , Dozer Bade, Reduced tail swing
Engine Manufacturer	Deutz
Engine Model	TCD 4.1 L4
Rating Standard - Gross	ISO 14396
Engine Output - Gross (kW)	105
Transmission Type	2 Speed Powershift
Number of Speeds	3
Dipper Tearout - Boost, Articulated Boom (kN)	66
Bucket Breakout - Articulated Boom (kN)	94
Main Pump	Variable axial piston
Number of Main Pumps	2
Total Flow - Main Pumps (L/min)	234
Max Operating Weight* (kg)	14500



ZAXIS 150 W

ZX150W-7 Specifications

Emissions	Diesel (Stage V)
Regions	Europe
Features	Mono Boom Dozer Bade / 2-Piece Boom, Dozer Bade
Engine Manufacturer	Deutz
Engine Model	TCD 4.1 L4
Rating Standard - Gross	ISO 14396
Engine Output - Gross (kW)	105
Transmission Type	2 Speed Powershift
Number of Speeds	3
Dipper Tearout - Boost, Mono Boom (kN)	69
Dipper Tearout - Boost, Articulated Boom (kN)	69
Bucket Breakout - Mono Boom (kN)	104
Bucket Breakout - Articulated Boom (kN)	104
Main Pump	Variable axial piston
Number of Main Pumps	2
Total Flow - Main Pumps (L/min)	234
Max Operating Weight* (kg)	Mono Boom: 15300 Articulated Boom: 15800



THE BENEFIT OF WHEELS





ZAXIS 155 W

The Hitachi ZX155W-7 wheeled excavator stands out as a game-changer in urban construction and utility projects, offering a unique blend of innovation and practicality. What makes it truly special is its seamless integration of advanced features with a user-friendly design, ensuring operators can navigate through tight spaces and challenging environments effortlessly. Its compact yet robust build makes it a versatile asset, capable of handling diverse tasks with precision and ease.



ZX155W-7 Specifications

Emissions	Diesel (Stage V)
Regions	Europe
Features	2-Piece Boom, Dozer Blade, Reduced tail swing
Engine Manufacturer	Deutz
Engine Model	TCD 4.1 L4
Rating Standard - Gross	ISO 14396
Engine Output - Gross (kW)	105
Transmission Type	2 Speed Powershift
Number of Speeds	3
Dipper Tearout - Boost, Articulated Boom (kN)	69
Bucket Breakout - Articulated Boom (kN)	104
Main Pump	Variable axial piston
Number of Main Pumps	2
Total Flow - Main Pumps (L/min)	234
Max Operating Weight* (kg)	16200





Discover unparalleled control with Hitachi wheeled excavators. Engineered for precision and efficiency, our machines are equipped with intuitive controls designed to empower operators and enhance productivity on every job site. From the ergonomic layout of joysticks and pedals to the seamless integration of advanced technology, such as automatic boom and bucket levelling, our wheeled excavators ensure smooth and precise movements with every operation. Experience the difference in control with Hitachi wheeled excavators and unlock new levels of efficiency and performance on your projects.

TOTALLY CONTROLLED



ZAXIS 175 W

ZX175W-7 Specifications

Emissions	Diesel (Stage V)
Regions	Europe
Features	2-Piece Boom, Dozer Blade, Reduced tail swing
Engine Manufacturer	Deutz
Engine Model	TCD 4.1 L4
Rating Standard - Gross	ISO 14396
Engine Output - Gross (kW)	105
Transmission Type	2 Speed Powershift
Number of Speeds	3
Dipper Tearout - Boost, Articulated Boom (kN)	75
Bucket Breakout - Articulated Boom (kN)	104
Main Pump	Variable axial piston
Number of Main Pumps	2
Total Flow - Main Pumps (L/min)	234
Max Operating Weight* (kg)	17000



DESIGNED SAFELY

At Hitachi, safety is at the forefront of everything we do. That's why our line of wheeled excavators is meticulously designed with safety as a top priority. From the ground up, each machine is engineered to provide operators with peace of mind and confidence in their work environment. With innovative safety features such as advanced stability control systems, intuitive operator interfaces, and enhanced visibility from the spacious cab, our wheeled excavators ensure safe and efficient operation on any job site. Backed by Hitachi's commitment to quality and reliability, you can trust our wheeled excavators to deliver outstanding performance while keeping operators safe every step of the way. Choose Hitachi wheeled excavators – designed safely for your peace of mind.



ZAXIS 180 W

ZX180W-7 Specifications

Emissions	Diesel (Stage V)
Regions	Europe
Features	Mono Boom Dozer Bade / 2-Piece Boom, Dozer Bade
Engine Manufacturer	Isuzu
Engine Model	4HK1X
Rating Standard - Gross	ISO 14396
Engine Output - Gross (kW)	128.4
Transmission Type	2 Speed Powershift
Number of Speeds	3
Dipper Tearout - Boost, Mono Boom (kN)	87
Dipper Tearout - Boost, Articulated Boom (kN)	85
Bucket Breakout - Mono Boom (kN)	108
Bucket Breakout - Articulated Boom (kN)	108
Main Pump	Variable axial piston
Number of Main Pumps	2
Total Flow - Main Pumps (L/min)	304
Max Operating Weight* (kg)	Mono Boom: 17700 Articulated Boom: 18200





ZAXIS 220 W

ZX220W-7 Specifications

Emissions	Diesel (Stage V)
Regions	Europe
Features	Mono Boom Dozer Bade / 2-Piece Boom, Dozer Bade
Engine Manufacturer	Isuzu
Engine Model	4HK1X
Rating Standard - Gross	ISO 14396
Engine Output - Gross (kW)	128.4
Transmission Type	2 Speed Powershift
Number of Speeds	3
Dipper Tearout - Boost, Mono Boom (kN)	140
Dipper Tearout - Boost, Articulated Boom (kN)	141
Bucket Breakout - Mono Boom (kN)	158
Bucket Breakout - Articulated Boom (kN)	159
Main Pump	Variable axial piston
Number of Main Pumps	2
Total Flow - Main Pumps (L/min)	430
Max Operating Weight* (kg)	Mono Boom: 20100 Articulated Boom: 20800



USED EQUIPMENT



Hitachi Construction Machinery Used Equipment offers an affordable alternative to new Hitachi machinery.

You'll find a consistent stock of high-quality used machines for sale from our used equipment department, available to view in our Meriden depot.

Available in a range of sizes, ages and hours, our Premium used machinery comes with a full maintenance history as standard, as well as the option for ongoing dealer service from Hitachi Construction machinery UK to provide you with complete peace of mind.

With a full pre-sales inspection report you can purchase your used machine with confidence, and our knowledgeable used equipment sales experts are there for you every step of the way to guide you through the process and ensure you get the right machine for the job.







USED MACHINERY

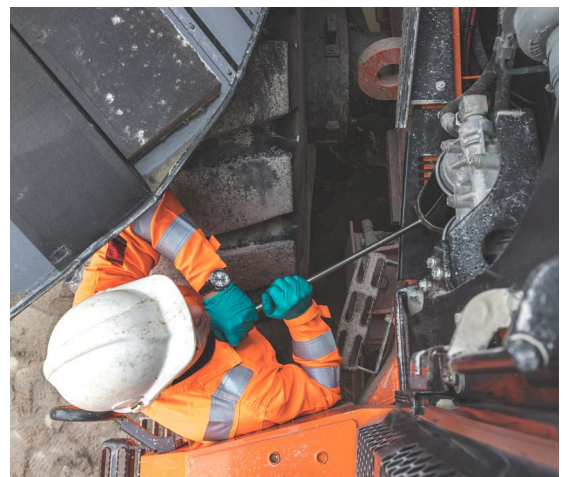


Our Full Range of Machines

Whether you need a wheel loader, an excavator, or a wheeled excavator, our range of used equipment changes daily with new stock coming in. So whether it's a -6 or a -7, our team will be able to help you find what you need at a price that is right for you and your budget.

Premium Used Equipment With Full Machine History

All of our premium used equipment comes with a full maintenance and service history and Hitachi backed drive line warranty, as well as a full pre-sale inspection, so you can be sure it comes with the proven reliability of a Hitachi machine. With ongoing service and extended warranty plans, you can reduce any unexpected costs and use your machine to it's full potential throughout it's lifetime with you.



HITACHI

Reliable Solutions



Our Dedicated Used Equipment Team

Our operations for our used equipment are based in Meriden, where our yard holds our range of pre-owned excavators, wheel loaders and wheeled excavators that are all cleaned, inspected, serviced and then photographed for our used equipment website where they are listed.

Our dedicated sales team are on hand to help you choose the right machine for your application based on hours, fitted attachments and model.

Our used equipment team only handle pre-owned Hitachi construction machinery, so are true experts in their field and can help you purchase with absolute confidence.



COST EFFECTIVE SOLUTIONS

SUPPORT SERVICES



As a Hitachi Construction Machinery owner, your ownership experience is equally as important as your machine.

HCMUK offer a range of support services, including our Hitachi Connected Technology range of 3D machine control systems to ensure safe, efficient and profitable operation of your plant.

With a range of Breaker Chisels and Tilt Rotators, HCT makes working with your machine easier than ever and expands the ability of your excavators and wheel loaders and their capabilities.

The CTFleet Link® range of trackers and immobilisers ensure a safe, secure and connected experience with your machine. With integrated trackers, monitoring systems and keypad immobilisers for our full fleet of machines you can ensure your machines are safe and secure on your job site. Should the worst occur, our trackers offer theft recovery assistance, ensuring your machines can be located and recovered easily and quickly.

All of our machines can also be financed with our ZAXIS finance solutions partner, offering an affordable way to purchase or lease your new Hitachi machine depending on your budget.



HITACHI CONNECTED TECHNOLOGY



Hitachi Connected Technology (HCT) offers you a range of market-leading 3D machine control, special attachments and safety solutions to enhance the efficiency and safety of your Hitachi equipment.

HCT work closely with your choice of approved supplier to ensure that installations on your new machines are carried out to the highest standard. Fitted by our manufacturer-trained engineers, all additional systems are supported by both HCT and the manufacturer for total peace of mind.



Machine Control

Machine control workflows improve the accuracy, efficiency, and profitability of your Hitachi excavator. Hitachi Connected Technology have partnered with machine control systems from Leica, Topcon & Trimble on Hitachi models ZX95-7 and up.



Tiltrotators

Want to make your Hitachi excavator even more productive? Experienced operators using tiltrotators estimate a productivity improvement between 20 - 35% depending on the application. The most popular models suitable for 13t & 20t size excavators are available to order from stock.



Safety Systems

HCT offer a comprehensive range of safety systems, including Safety Shield and XWatch products, to ensure safety across your job site. With features including height and slew limitation, rated capacity indicators and human detection, you can ensure your machines, your employees and the general public are safe, offering complete peace of mind.



Hydraulic Attachments

Our range of hydraulic attachments are perfectly suited to the full range of Hitachi mini excavators, medium excavators and large size excavators. They can be fitted and maintained professionally by our fully trained Hitachi engineers to ensure a continued high level of performance.



HITACHI

Reliable Solutions



CTFLEET LINK®

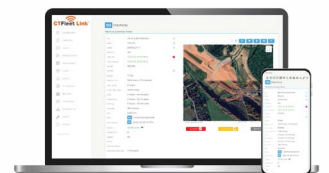
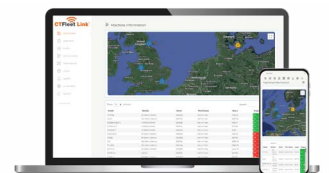


Designed by Hitachi Construction Machinery (UK), CTFleet Link® is a mixed-fleet telematics system, which utilises both the Hitachi API and a bespoke API developed by HCMUK. CTFleet Link® gives you access to a live online portal to monitor the performance and location of not just your Hitachi equipment in real time but also those of other manufacturers you may have in your fleet.

An industry first, CTFleet Link® also delivers live data into the portal from any Xwatch Safety Solutions system fitted to the machine, when paired with our CTFleet Link® telematics device.

CTFleet Link® is the perfect solution for your fleet management requirements. Not only is it compatible with your Hitachi assets from ZX-5 through to the latest ZX-7 excavators, it is also the perfect companion for your other OEM equipment from small tooling and ancillary plant, up to the largest equipment in your fleet.

All new ZX-6 mini excavators supplied by HCMUK are fitted with the CTB1 telematics device as standard complete with a 36-month subscription to the CTFleet Link® portal. Reporting not only live location and operating hours, but CTFleet Link® also gives you the ability to trace the machine's movements and set a geofence around the machine receiving any breach alerts by text or email 24/7.



Scan the QR
code to find
out more



ZAXIS Finance



We have teamed up with BNP PARIBAS LEASING SOLUTIONS to support our customers with flexible financing solutions available for both new and used equipment.

ZAXIS Finance specialises in providing finance, hire purchase and operating lease financing to the construction and demolition sectors amongst others, proving a perfect fit for our customers.

Our partnership demonstrates our vision of being a class leading solutions partner, enabling us to individually tailor every aspect of our customer's buying and ownership experience, helping you to grow your business.

BNP Paribas Leasing Solutions has been providing vendor financing solutions for capital equipment partners in the UK for more than 50 years.

Part of a leading global finance group, it specialises in asset finance solutions for a range of industry sectors, including construction and demolition. As a trusted funder with a strong pedigree and a passion for building lasting and mutual relationships, Leasing Solutions is committed to supporting partners in achieving their commercial ambitions.



FINANCE

A finance lease gives you access to the latest Hitachi Construction Machinery in return for a regular rental amount. Effectively ZAXIS Finance rents the machinery to a customer for an agreed period, and at the end of the hire period, the asset is returned to ZAXIS Finance.

The leasing agreement is an affordable rental price that can be offset against taxable profits. The asset repayments count as a business expense and are fully tax allowable, and therefore VAT registered companies can claim back any VAT included within the rental payments.

What's more, maintenance costs can also be included in the repayment plan, integrating our SOLAS packages into your agreement, meaning there are no unexpected costs down the line.

Financing your Hitachi Construction Machinery is one of the most cost effective options of rental.

HIRE PURCHASE

We offer flexible, cash flow-friendly business hire purchase agreements. With this solution, you benefit from a payment model that can be structured around your needs.

New equipment and machinery can be an expensive investment. A replacement excavator may be more efficient than an already owned, but rapidly deteriorating model – but where you see an opportunity for substantial productivity gains, accounting teams may see a large hole in the annual budget and cash flow issues.

A business hire purchase arrangement represents a way to bridge this gap. It works simply: you pay the full VAT upfront, with repayments over an agreed contractual period, before taking full ownership of the item.

To further reduce rentals a part-exchange, deposit, or balloon rental can be added to the payment profile.

OPERATING LEASE

Every business requires equipment, but not every business can justify the expense of an outright purchase.

There are many reasons for this: you may have no budget left to allocate, the finance department may take issue with the transaction or you may have a functional asset that performs competently albeit not especially well.

Operating lease presents a solution to this problem. If you are looking to secure vital assets without making a significant upfront financial commitment, an operating lease is a very attractive option.

The way it works is simple. Over the course of an agreed contractual period, you pay a fixed periodic rental (+VAT). During this period, you'll have full, unrestricted access to the asset. At the end of the contract, the asset is returned.



Hitachi Construction Machinery UK
www.hitachicm.co.uk

General Enquiries: 0191 430 8400
Product Support: 03300 135 890

Hitachi Construction Machinery (UK)
Monkton Business Park North, Hebburn,
Tyne & Wear NE31 2JZ

